



Chamber Connections

2025 BOARD OF DIRECTORS

Melanie Jones

President
Flemingsburg Tourism

Betsy Case

Vice President
Peoples Bank of
Kentucky

Dabney Hart

Secretary
Hypac Hydraulics

Maleah Hendrix

Treasurer
Donna Hendrix CPA

Becky Bowling

ABC Administrator

Michele Bowling

606 Sales & Events

Amber Dodson

PrimaryPlus—
Flemingsburg

Misty Dunaway

The Hairloft

Joe Gulley

Windy Ridge Acres

Stephanie Hardin

Fleming County PVA

Jennifer Hazelrigg

Hazelrigg Realty
& 606 Sales & Events

Mike High

Industrial Field
Maintenance (IFM)

Wes Hilterbrand

Hilman Industries

Amanda McIntyre

Pioneer Trace Group

Emily Sapp

Emily B. Sapp
Insurance

Cody Thompson

Community Trust Bank

Crystal L. McCall Ruark

Executive Director

Haylee Marshall

Admin. Assistant

Note from the desk of:
Executive Director,
Crystal L. McCall Ruark

May/June 2025



Hello and Welcome to Spring now let's get busy celebrating our community's Small Businesses by showing them a little extra love and support throughout the entire month of May.

May 4th thru May 10th is **National Small Business Week** and the Fleming County Chamber of Commerce will be spotlighting our Members/Partners throughout the entire month of May, and we encourage each of you to get out and show our businesses a little extra care by, Shopping Local and Supporting Local.

Our Small Family and Friend Owned Businesses are the heart of our community and many are the backbone of the events and activities that take part here in Flemingsburg/Fleming County on a day to day basis. While you're out shopping be sure to look for the **Chamber Bucks Program** in participating Chamber Businesses for your chance to register to win either \$100 or \$50 in Chamber Gift Checks. This program will run from May 5th thru May 30th with drawings being held each week for 4 weeks. If you aren't already, we invite you to "Like" our page on Facebook and check out the Businesses being shoutout for Small Business Month. Each week throughout May we will be featuring different categories of Members/Partners and some of them will have their own promotions to share.

Coming up on **Thursday, May 15th**, the Chamber will host a **Downtown Small Retail Business Tour** which will feature Ada Junes Boutique, Evening Shades, Lasting Impressions Flower and Gifts, The Picket Fence of Flemingsburg, Yoder's Dinner Bell Market, Total Care Pharmacy on Main and Total Care on Pharmacy on Clark and concluding at Steve's Ace Hardware. Box lunches will take place at The Dinner Bell while shopping there. Watch your emails and social media for more details on registering and cost to participate in our Small Downtown Business tour.

Shopping Selfies will be another way that we plan to showcase our businesses during Small Business Month. Those participating in our Shopping Selfies promotion are encouraged while shopping at our local businesses to take a selfie at the businesses with your receipt, post on social media and tag the business as well as the Chamber. After you have visited 4 different businesses during the month of May and have followed the instruction above you will be entered into a drawing for a change to WIN a Community Business Gift Basket.

Chamber Gift Checks are also another way to support our Small Businesses. There are so many opportunities for individuals to use Chamber Gift Checks for those special gifts and/or Spring Garden, lawncare, home repair supplies, ... (Prom, Mother's Day, Teacher Appreciation, Rodeo at 606, Graduation, National EMS Week, National Police Week, Birthdays, Weddings, Just to say Thank you and Memorial Day just to list a few.)

We sincerely appreciate each of you and Thank you for your continued support of the Chamber. We look forward to having your join us on Friday, May 16th for our next **FREE** networking event: **Connections over Coffee**, sponsored by: The Hairloft Salon; Time: 7:30am to 9:00am.

Respectfully,
Crystal L. McCall Ruark
Executive Director

Fleming County Chamber Office / 165 W. Water Street, Flemingsburg, KY

Contact #: 606-845-1223 / Website: www.flemingkychamber.com

Emails: crystal@flemingkychamber.com
haylee@flemingkychamber.com

#FCCChamber #SupportSmallBusiness #ShopLocalSupportLocal #SupportLocalBusinessOwners

Thank You!

Diamond Partners

City of Flemingsburg
Fleming County Fiscal Court

PLATINUM

Womack
Family
Farms



CHEAP CHEVROLET



GOLD



Carlisle
Contracting
LLC



Fleming County
Water Association



STORY REALTY
WE WORK FOR YOU



TO OUR PARTNERS!

PAGE 3

SILVER

Edward Jones[®]

BRONZE

**Baldwin CPA's
McDonalds of Flemingsburg
Military Adventure Camp at Camp Sousley
Pioneer Trace Group
PrimaryPlus
Weaver Roofing Services, LLC**

COPPER

**DJE Construction
Double D Trailer Parts and Service
Egan Technology Services
Emily B. Sapp Insurance
Family Medicine Associates of Flemingsburg
Fleming County Golf Association
Fleming County Public Library
Golden Rule Vinyl Inc
Hypac Hydraulics
Michael R. Gray Funeral Home
Pollock Solutions
Story's Barbershop
The Hairloft LLC**

PAGE 3

New Members for 2025

Dandy's Dumpster Rentals
Egan Technology Services — Copper Partner
 Golden Rule Vinyl
Harrison Memorial Hospital— Platinum Partner
 Hazelrigg Appraisals
 The Grooming Barn
 The Topsy Trailer
 UK St. Claire

Returning Members for 2025 (renewed after February 28th)

A.W. Graham Lumber— Gold Partner
Araymond— Platinum Partner
 Arricks Propane
 Boone-Nickell Funeral Home
 Buffalo Trace Surveying, LLC
ByPass Total Car Care— Gold Partner
 Champion Printing/Chapman Printing
CHI Saint Joseph Health— Gold Partner
Community Trust Bank— Platinum Partner
 Cozy Nook Gallery
 Cruising for Kids
 deSha's American Tavern
 Donna J. Hendrix, PSC, CPA
 Double S Entertainment
 Farmers Stockyards
 Fizer Carpet
Fleming County Golf Association — Copper Partner
Fleming County Hospital— Platinum Partner
 Fleming County Rotary Foundation Inc.
 Fleming Meat Packers
 Gateway Area Development District
 Glass with Sass
Greentree Forest Products— Platinum Partner
 HL Land Holdings, LLC
 Jill S. Price Dentistry PLLC
 Johnathan Gay, Commonwealth Attorney
 Lasting Impressions Flowers, LLC
 LeighAnn's Cream Candy & Creative Confections
McDonalds of Flemingsburg— Bronze Partner
 Mike and Margaret Denham
Pioneer Trace Group— Bronze Partner
 Ron and Mary Jo Litton
 Save A Lot
 Shear Style Hair Salon
 Steve Donovan
 Top Notch Spray Foam LLC
Total Care Pharmacy— Gold Partner
 Triple G. Quality Meats
Weaver Roofing Services, LLC— Bronze Partner

***** Members who joined after May 5th will be in the next newsletter for July/August *****



SAVE the DATE
 and start getting your Team together
 for a
GREAT Day on the GREENS
Saturday, June 28, 2025

This year **Pollock Solutions Unlocking Service** will be sponsoring a
\$25,000 Hole in One! Don't miss out on the opportunity to
 take home this awesome prize. Get your team of 4 signed up today.

Are you taking advantage of the extra benefits associated with your membership in the Chamber?

The following are programs Members have an opportunity to participate in:

- **Chamber Advance Employer offers Health Insurance** through Anthem.... Give the Hinton Agency a call to learn more!
- **Discounts on Workers Comp. Coverage** through ClearPath Reach out to the Kentucky Chamber to learn more!
- **Discount on Office Supplies** through Staples!
- **Chamber Gift Check Program**

*Free for Members to participate in, sign up at the Chamber office

Be sure to take full advantage of your investment in the Chamber.



Explore Fleming County

Seeking new members/volunteers to join us in promoting the many assets we have here in Flemingsburg/Fleming County From Covered Bridges, Murals, Barn Quilts, Historic Building and Architecture, walking trails and so much more. Our next meeting will be held at the Chamber office.

165 W. Water Street, Flemingsburg
Wednesday, May 14th @ 8:30 am



Ribbon Cutting

On Monday, March 10, 2025, the Fleming County Chamber of Commerce had the pleasure of hosting a Ribbon Cutting for Dr. Emma Jones DVM, the new owner of the **Fleming County Animal Hospital**. Dr. Jones is a Fleming County native and a graduate of Auburn University. Emma started her career in the tutelage of Dr. Frankie Vice and Dr. Ronnie Gillum before spending the last few years working with Dr. Stephen Pinkston and Dr. David Pinkston. Now she is excited to have the opportunity to purchase the practice and continue serving local patients and those in the surrounding areas. Dr. Jones along with Dr. Billy Parsons and a well-trained informative and friendly staff of technicians and receptionists are ready to help you with all your pets needs.

The Fleming County Animal Hospital is located at 500 West Water Street in Flemingsburg and is open Monday through Friday from 8:00 am until 5:30 pm as well as on Saturday from 8:30 am until 1:00 pm. Call their office at 606-845-4951 or email them at fcch2019@yahoo.com. You can also follow them on their Facebook page Fleming County Animal Hospital.

Congratulations Dr. Emma Jones on your purchase and future at the Fleming County Animal Hospital!!

Pictured left to right: Chamber Director Jennifer Hazelrigg, Paula Knipp, Rhonda Curran Koth, Kristina Stock, Carina Miller, Kara Stewart, Chandler Corbin, Kelsey England, Owner: Dr. Emma Jones, Dr. Billy Parsons, Cody & Jocelyn Jones, Wendy Johnston, Brooks Butler, Abby Hardymon, Chamber Director Joe Gulley, Chamber President Melanie Jones, Chamber Directors: Cody Thompson & Becky Bowling, Joe Dunaway Jr., Chamber Directors: Misty Dunaway & Emily Sapp, Chamber Vice President Betsy Case, Michele Butler, and Chamber Director Wes Hitlerbrand.

Present but not pictured: Chamber Executive Director, Crystal L. McCall Ruark and Administrative Assistant Haylee Marshall.



The Fleming County Chamber of Commerce would like to say a special thank you to the **Kentucky Career Center - TENCO, Cassie Hunt, Steven Peed, Cody Shannon with Double S Entertainment Bowling Center & JB'S Grill** for partnering with us for the Career and Resource Fair.

Special thanks also to our Chamber Board of Directors & Staff who participated today: Melanie Jones, Amanda McIntyre with Pioneer Trace Nursing & Rehabilitation Center, Mike High with IFM, Haylee Marshall, Crystal L McCall Ruark & Thank You also to Katie Fryman with Fleming County Cooperative Extension Services for helping us out today as well.

Thank you to the 30+ businesses and organizations who came out participated in today's event and to all those who stopped by inquiring about employment.



Ribbon Cutting

The Fleming County Chamber of Commerce held a Ribbon Cutting on Tuesday, April 8th 2025 for their newest Chamber Member, The Grooming Barn!

Help us in congratulating and welcoming this new business into our business community and Chamber of Commerce!

The Grooming Barn is located on 353 Helena Rd, Flemingsburg, KY 41041. You can contact them by calling, 606-584-8133. Their hours of operation are Tuesday-Friday from 9-5. They are offering grooming services as of now, once renovations are complete they will offer boarding and daycare services as well.

Make sure to like their Facebook Page, The Grooming Barn to stay updated on what they are doing!

The Grooming Barn is also participating in our Chamber Gift Check Program, so be sure to keep that in mind when looking for a place to redeem your gift check!



Pictured from left to right:
Chamber Director, Jennifer Hazelrigg, Chamber Vice President Betsy Case, Chamber Director Emily Sapp, Stephanie Browning, Owner Josie Browning, Addyson Browning, Chamber Director Stephanie Hardin, Chamber Director Michele Bowling, Chamber President Melanie Jones, Chamber Director Amber Dodson, and Chamber Director Wes Hilterbrand.

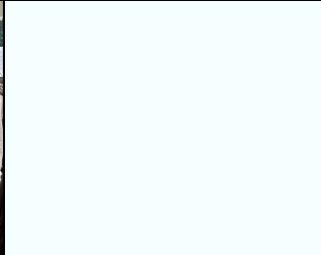
Present but not pictured: Chamber Executive Director, Crystal L McCall Ruark and Chamber Administrative Assistant Haylee Marshall.

Connections over Coffee

The Fleming County Chamber of Commerce hosted their second Connections over Coffee for 2025 on Friday, March 21st at City Hall, Sponsored by **The City of Flemingsburg**.

We had 25 attendees which represented 14 businesses in our community! Thank you to the City of Flemingsburg for Sponsoring our March Connections over Coffee and thank you to everyone who stopped into City Hall to participate in this free networking event!

Thank you also to Mr. AJ Mullholand, a teacher at SMS and the SMS 2025 Amazing Shake Winners for attending this event: Makynlee Mullholand, Riley Stull, and Ava Sims. Congratulations!



Are you a Chamber Business who is in need of additional employees?

Reach out to us with your information so we can get you added to our weekly **"Wake Up & Work"** email list and social media posts.

We generate a list of businesses that are hiring within our community and region not only to assist our businesses with finding the right employee but to educate those seeking a new job as to whose hiring.

To ensure that your open positions are included in our **"Wake up and Work"** email them to: haylee@flemingkychamber.com

****Reminder: Once you have filled your positions, please let us know so that we can removed your business from the list.**

CALL FOR NOMINATIONS



**DEADLINE
TO NOMINATE:
JUNE 20 @ 5PM**



Gateway & Buffalo Trace
SMALL BUSINESS AWARDS


Tuesday, August 26, 2025
Adron Doran University Center, 3rd Floor
Morehead, KY
Hosted By: Kentucky SBDC in Morehead



Funded in part through a cooperative agreement with the U.S. Small Business Administration. All opinions, conclusions or recommendations expressed are those of the author(s) and do not necessarily reflect the views of SBA.





 Cooperative
Extension Service



2025 DONNA FRYMAN WALKING CHALLENGE

23, 211, 709 STEPS

17 TEAMS

85 INDIVIDUALS

MOST OVERALL STEPS: HUFF N' PUFFS 2,478,637

**WEEK 1 & 3 WINNER:
MARTY BRANDENBURG
(133,935 WEEK 1)
(182,712 WEEK 3)**



**WEEK 2 WINNER:
BONNIE PORTER
(139, 556 STEPS)**

MOST IMPROVED: THE TAX PACERS

MOST CREATIVE TEAM NAME: SCRAMBLED LEGS

The 2025 Donna Fryman Healthy at Work Walking Challenge was a success once again!

We partnered with the Fleming County Cooperative Extension Office and our totals are in!

17 Teams
85 Individuals
23,211,709 Steps Total

Most Overall Steps Team Winner:
Huff N' Puffs 2,478,637

Most Improved Team Winner:
The Tax Pacers

Most Creative Team Name:
Scrambled Legs

Week 1 Winner:
Marty Brandenburg — 133,935

Week 2 Winner:
Bonnie Porter — 139,556

Week 3 Winner:
Marty Brandenburg — 182,712

Thank you to everyone who participated in this fun challenge!

Are you staying up-to-date on the many events, activities and happening taking place in our community and especially with our Chamber Businesses and Organizations?

We invite you to not only check out our online calendar of events at: www.flemingkychamber.com but to also tune into **WFLE 95.1 FM** and listen to 'Our Town' to learn more. **The Fleming County Chamber of Commerce's** segment of airs on "Our Town" on the First Friday of each month at roughly 10:00 a.m.



Follow us as well in the **Fleming Shopper**, **Flemingsburg Gazette**, **Ledger Independent**, **WFLE Radio**, **FCA-TV** as well as our Facebook page...

Fleming County Chamber of Commerce



Fleming County Chamber Businesses who are accepting Chamber Gift Checks

Ada June's Boutique
 A.W. Graham Lumber, LLC
 Arrick's Propane
 Be Still Massage & Wellness
 Buffalo Trace Surveying, LLC
 ByPass Total Car Care
 Cheap Chevrolet
 City of Flemingsburg
 Community Trust Bank (Main Office Only)
 Creativity Yours Salon
 Dandy's Dumpster Rentals
 Donna J. Hendrix, CPA PSC
 Double D Trailer Parts and Services
 Double S. Entertainment/JB's Grill
 Egan Technology Services
 Evening Shade Boutique
 Explore Fleming County
 Farm House Blessings
 First Choice Animal Clinic
 Fizer's Carpet
 Fleming-Mason Energy
 Fleming County Activity & Education Center
 Fleming County Hospital
 Fleming County Golf Association
 Fleming County Public Library
 Fleming County Water Association
 Flemingsburg Lions Club
 Hinton Mills (Flemingsburg only)
 Hypac Hydraulics
 Jill's Spare Thyme Treats, Catering, & More

Jimmy Hall Trees & Shrubs
 Ken's Fresh Foods
 Lasting Impressions Flowers & Gifts
 LeighAnn's Cream Candy & Creative Confections
 McDonald's of Flemingsburg
 Masters Acres
 Ole Seasons Shoppe
 Pollock Solutions
 R & W Dumpster Service
 Rigdon Retrievers & The Retreat
 Rose Farm Supply
 Save-a-lot
 Shear Style Hair Salon
 Simplex Tax and Accounting
 Sims Dairy Queen
 Southern States of Flemingsburg
 Steve's Ace Hardware
 Story's Barbershop
 The Grooming Barn
 The Hairloft
 The Picket Fence of Flemingsburg
 Tire World of Flemingsburg
 Total Care Pharmacy on Clark
 Total Care Pharmacy on Main
 Triple G. Quality Meats
 V & V Catering LLC
 WFLE Radio—95.1 FM
 Yoder's Dinner Bell Market



Another Awesome Chamber Benefit

Are you participating in this program? If not, Why?

The **Fleming County Chamber Gift Check Program** is a **FREE** program to any/all Chamber Members who wish to participate in! **Chamber Gift Checks** can be redeemed at over 60 Chamber Business which are listed above towards the purchase of a Good and/or Service.

Example: If you receive \$25 in Chamber Gift Check and use it at any location above that accepts Chamber Gift Checks, then the business gets to deposit that check in their business account as if it were a personal check. The person spending/paying with the gift checks aren't out anything! It becomes a win-win situation for both parties.

Disclaimer: The Fleming County Chamber of Commerce does NOT profit from the Gift Checks Program. All money goes directly towards the business(es) in which the gift checks are used.

NOTE: It is our recommendation that if someone uses a Gift Check with your business and they do not use the entire amount, that you offer them a store credit/gift card for the remaining balance. This is just a recommendation as this program was designed to support local Chamber Businesses and if you are giving back change, there's no guarantee that the remaining balance will be spent locally. If someone purchases, for an example, a Walmart Gift Card they can only use that gift at Walmart and Walmart does not give back cash on monies remaining on their card. Again, this is only our recommendation. As a business owner you're free to handle the remaining balance from the gift check as you see best.

Small Business Month

Chamber Bucks Program

The Chamber Bucks Program is here once again! May is Small Business Month

There will be a drawing on May 9th, May 16th, and May 23rd
one winner of a \$50 Gift Check and one winner of a \$25 Gift Check on each of those dates.

So be sure to enter to win when you see the business set up with their box or basket!

Chamber Mini-Commercials

If you are a Chamber Member or Partner and would like to film a mini commercial for Small Business Month, please give us a call 606-845-1223 to get that set up!

Downtown Small Retail Business Tour — Thursday, May 15th

Please RSVP by Monday, May 12th by calling 606-845-1223 / Cost: \$15

Participating Businesses for the Tour include:

Lasting Impressions Flowers and Gifts
Ada June's Boutique
Evening Shade Boutique
The Picket Fence of Flemingsburg
Yoder's Dinner Bell Market
Total Care Pharmacy on Main and Clark
Steve's Ace Hardware

Small Business Month Selfies

Take a selfie with your receipt from at least 4 different business while shopping local in Fleming County during Small Business Month and post on Facebook! Tag us along with the business you shopped in to be registered to win a gift basket with merchandise from local businesses.

The winner will be drawn on Wednesday, June 5th!

If you have any questions, contact our office!

Business over Breakfast



The Fleming County Chamber of Commerce held their first Business over Breakfast on Tuesday, March 4th 2025 at Fleming-Mason Energy. We had 39 attendees who represented 23 businesses in our community.

We had Guest Speakers, Steven Peed with the Kentucky Career Center and Waverly Henson with Licking Valley Community Action Program. Steven was very informative with what the Kentucky Career Center has to offer to our community, employer or employee. Waverly did a great job explaining the idea of a Bus to Business Pilot Program. We thank them both for their valuable and insightful information and for being a guest speaker!

Special thanks to Chamber Platinum Partner, Fleming-Mason Energy for the use of their facility and to Chamber Member, V&V Catering for the delicious breakfast.

Thank you also to our Breakfast Committee: Betsy Case, Becky Bowling, Michele Bowling, Misty Dunaway, Emily Sapp, and Maleah Hendrix. As always, we appreciate the continuous support from our Members and Partners in the Fleming County Chamber of Commerce.

Northeast KY Regional Workforce Conference

The 2025 Northeast Kentucky Regional Workforce Conference had insightful discussions, valuable networking, and learning so much about the future of our workforce. A huge thank you to all the speakers, attendees, and organizers who made it such a success! Don't miss out on next year's opportunity to connect, learn, and grow!

Mark your calendars now for the **2026 Northeast Kentucky Regional Workforce Conference: March 24-25, 2026**. We look forward to seeing you there!





Basics of Estate Planning Series

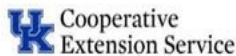
This series will cover the basics of estate planning, led by Rhonda Curran Koth from Edward Jones. Participants in the first session will complete a survey to help shape the topics for the following two sessions. Lunch will be provided. Please use the QR code to register. For more information, contact Katie Fryman, katie.fryman@uky.edu (606.845.4641) or Crystal Ruark, crystal@flemingchamber.com (606.845.1223) or Rhonda Curran Koth, rhonda.currankoth@edwardjones.com (606.845.1800)

-  **April 16th 11:30am-1:00pm**
-  **May 21st 11:30am-1:00pm**
-  **June 18th 11:00am-1:00pm**



All sessions will be hosted at the Fleming County Extension Office.

1384 Elizaville Road, Flemingsburg, KY 41041



Cooperative Extension Service
Agriculture and Natural Resources
Family and Consumer Sciences
4-H Youth Development
Community and Economic Development

MARTIN-GATTON COLLEGE OF AGRICULTURE, FOOD AND ENVIRONMENT
Educational programs of Kentucky Cooperative Extension serve all people regardless of economic or social status and will not discriminate on the basis of race, color, ethnic origin, national origin, creed, religion, political belief, sex, sexual orientation, gender identity, gender expression, pregnancy, marital status, genetic information, age, veteran status, physical or mental disability or receipt of public benefits. Reasonable accommodation of disability may be available with prior notice. Program information may be made available in languages other than English.
University of Kentucky, Kentucky State University, U.S. Department of Agriculture, and Kentucky Counties Cooperating.
Lexington, KY 40546



JOIN US FOR...

Connections Over Coffee

FRIDAY, MAY 16TH

7:30 A.M - 9:00 A.M



Thank you to **The Hairloft** for sponsoring our May Coffee Talk!



If you would like to sponsor a Coffee Talk in the future, contact the Chamber Office: [606-845-1223](tel:606-845-1223)

271 SOUTH MAIN CROSS STREET, FLEMINGSBURG, KY 41041



4TH ANNUAL

606 RODEO

May 9 - 10, 2025

Opens daily at 4:30pm, Rodeo at 7:30pm
5194 Ewing Rd., Ewing, KY 41039

QUESTIONS CALL
606-782-6360

ADULTS : \$20

AGE 13 - 17 : \$15

AGE 12 & UNDER
FREE





Fleming County Chamber of Commerce and Fleming County EMS



will be hosting 4 Separate Non-Medical

CPR and First Aid Training Classes

American Safety and Health 2 year Certification

SELECT ONLY 1 DATE

Certification

Date: Tuesday, March 11th, 2025

Time: 9am to 1pm (end time will depend on class size)

Location: Fleming County EMS Building on the bypass

Instructor: Colton McCann, Paramedic/EMS In-

CANCELLED



Certification

Date: Tuesday, June 3rd, 2025

Time: 9am to 1pm (end time will depend on class size)

Location: Fleming County EMS Building on the bypass

Instructor: Colton McCann, Paramedic/EMS Instructor

Cost: \$55 per participant

Certification

Date: Thursday, August 7th 2025

Time: 9am to 1pm (end time will depend on class size)

Location: Fleming County EMS Building on the bypass

Instructor: Colton McCann, Paramedic/EMS Instructor

Cost: \$55 per participant



Certification

Date: Thursday, November 13th 2025

Time: 9am to 1pm (end time will depend on class size)

Location: Fleming County EMS Building on the bypass

Instructor: Colton McCann, Paramedic/EMS Instructor

Cost: \$55 per participant

To get signed up for one of these
upcoming training sessions

Call the Fleming County Chamber

606-845-1223

Class sizes are limited to 10 person max

Advance payment required / We can
invoice your place of employment if needed

No Refunds

Upcoming Events



**The Fleming County
Covered Bridge Museum
is open:**

**Wednesdays: 10-4
Saturdays: 12-4**

(Or by Appointment)

For a full Calendar of Events,
please check out the Fleming
County
Chamber of Commerce website
at:

May:

7th: Chamber Directors Meeting
@ City Annex 9:00am
9th-10th: 606 Rodeo
9th: Week #1 Chamber Bucks Drawing
11th: Mother's Day
12th: City Council Meeting 6:00pm
13th: Fiscal Court Meeting 9:00am
14th: Explore Fleming County Meeting
@ Chamber Office 8:30am
16th:

- Connections over Coffee
@ The Hairloft 7:30-9:00am
- Peoples Bank of KY Customer
Appreciation Day
- Week #2 Chamber Bucks Drawing

21st:

- Licking Valley Adventures Meeting
@ 8:30am
- Estate Planning Series #2 at the
FC Extension Office @ 11:30am
- Record WFLE @ 2:00pm

22nd: NKY Tourism Regional Meeting
@ 10:30am
23rd: Week #3 Chamber Bucks Draw-
ing
26th: Memorial Day / Chamber Office
Closed

June:

3rd: CPR/First Aid Training
@ EMS from 9-1
4th: Chamber Directors Meeting
@ City Annex 9:00am
9th: City Council Meeting 6:00pm
10th: Fiscal Court Meeting 9:00am
11th: Explore Fleming County Meeting
@ Chamber Office 8:30am
12th: Chamber Breakfast @ 7:00am
15th: Father's Day
18th: Estate Planning Series #3 at the
FC Extension Office @ 11:30am
21st: Summer Palooza 10 am-10pm
25th: Record WFLE @ 2:00pm
27th: Aloha in the Park
28th: Annual Golf Scramble

5 Reasons to Join Your Local Chamber



Opportunities and resources



Access to information



Networking



Publicity and credibility



Advocacy

#SupportYourLocalChamber



Follow our Facebook Pages:

- Fleming County Chamber of Commerce
 - Discover Flemingsburg
- Sparkle & Shine, It's Christmas Time
 - Fleming County Jobs
- Kentucky Covered Wooden Bridge Trail
- Fleming County Work-Ready Community
 - Explore Fleming County

Follow our other social media sites:

Instagram: [@flemingkychamber](#)

Website: www.flemingkychamber.com

YouTube: [@flemingcountychamberofcommerce](#)